



NATURE IMPROVED:

SAN DIEGO ARTISTS INTERPRET OUR LANDSCAPE

NATURE
IMPROVED

san diego
artists interpret
our landscape

Many thanks to our Exhibition Sponsors
and those who graciously loaned
artwork for this exhibit.

EXHIBITION SPONSORS

Jazz 88.3

The Ruth and Charles Billingsley
Foundation

LENDERS

Bob Baily and Jeff Stinebiser

Blue Heron Gallery, Fallbrook, CA

City of San Diego Commission
for Arts and Culture

Drs. Bram and Sandra Dijkstra

Connie and Mike Genuardi

Rita E. Gibson

Bennet and Karan Greenwald

Schuyler and Ruth Hoffman

Kathi and John W. Howard

Scott T. Kelley and Varkina G. Thackray

Michael and Lauren Mahan

Julianne McColl

Noel-Baza Fine Art

Oceanside Museum of Art

Courtney Ostanik

RB Stevenson Gallery

Ronald Feldman Fine Arts, New York

Scott White Contemporary Art

James Barker and Ron Schmidt

Louis and Susanne Wolfsheimer

Quint Contemporary Art

SAN DIEGO HISTORY CENTER
SEPTEMBER 19, 2013 - MARCH 3, 2014

SAN DIEGO HISTORY CENTER



Founded in 1928, the San Diego History Center tells the diverse stories of our region – past, present and future – educating and enriching our community, preserving our history and fostering civic pride. The History Center is one of the oldest and largest historical organizations in the West and is one of the few institutions nationwide dedicated to celebrating the heritage of a major American city.

The History Center owns, preserves and makes accessible to the public: 45 million documents; 2.5 million historic photos; 15,000 artifacts, some dating back hundreds of years; 1,500 oral histories; 7,000 items of historic apparel, one of the 10 best collections in the U.S.; and a significant collection of San Diego artwork.

The History Center operates significant facilities in two National Historic districts: The History Center Museum and Research Library in Balboa Park, and the Serra Museum, an iconic regional landmark in Presidio Park.

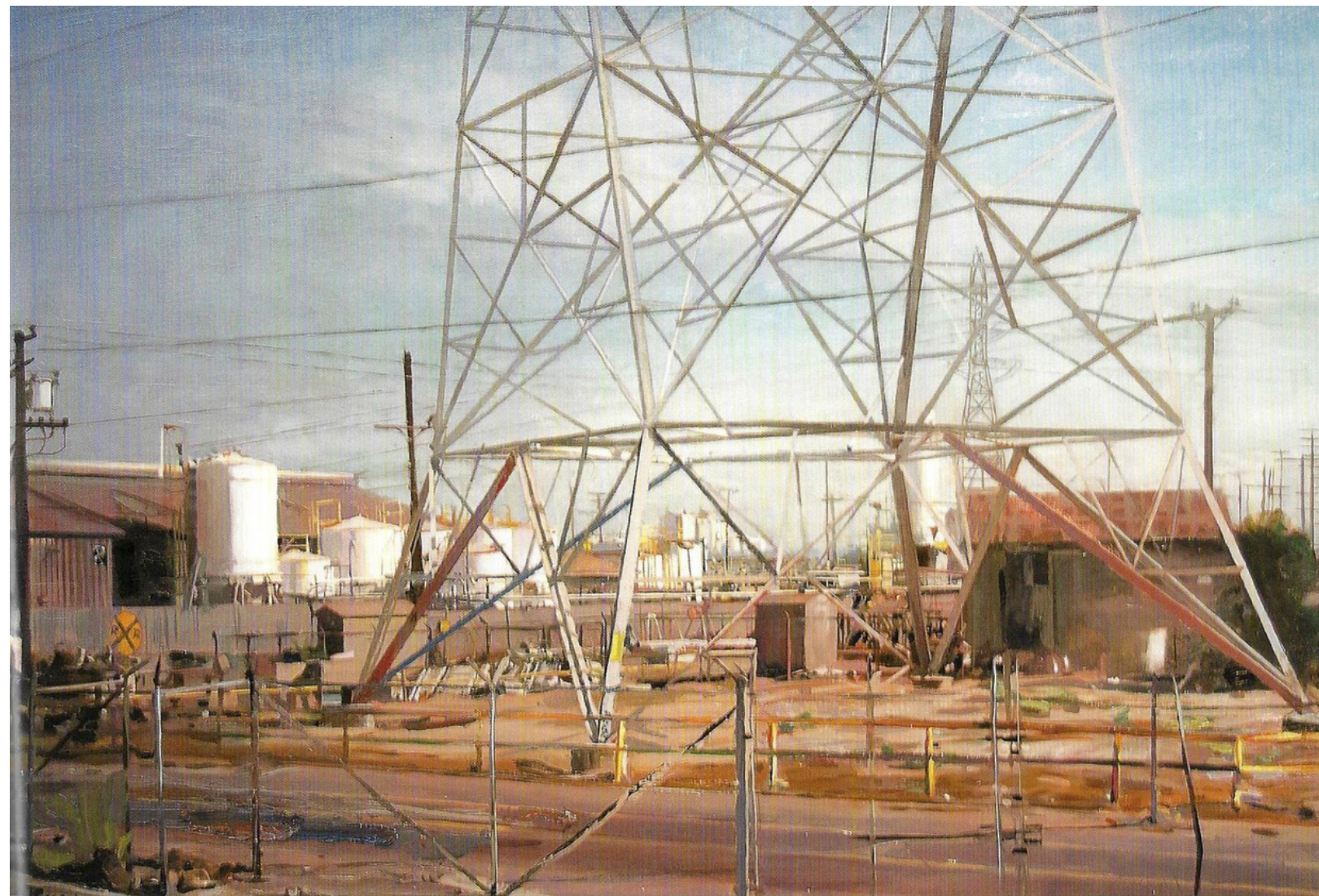
www.sandiegohistory.org

OCEANSIDE MUSEUM OF ART
NOVEMBER 1, 2013 - FEBRUARY 23, 2014



Oceanside Museum of Art

Oceanside Museum of Art (OMA) is a premier regional art museum in Southern California and a leader of arts and culture in North County San Diego. Opened in 1995, OMA educates and inspires through a unique range of diverse engaging exhibitions and programs that connect people with regional, national and global artists and art forms. Originally housed in a 1934 historic Irving Gill building, the museum was expanded in 2008 with a Frederick Fisher 3-story modern architecture renovation that now offers diverse and scholarly exhibitions in its five state-of-the-art museum galleries. The museum is open Tuesday-Saturday 10 am to 4 pm and Sunday 1 to 4 pm. For more information call (760) 435.3720 or visit www.oma-online.org.



Kim Reasor, *Big Electricity*, Oil on Canvas, 2011, Collection of Drs. Bram and Sandra Dijkstra





Lynn Schuette, *Extraviado (Lost)*, Acrylic on Canvas, 2012, Courtesy of the artist

Lynn Schuette, Song, "In a World Where Butchers Sing Like Angels" series, Acrylic on Canvas, 2003, Courtesy of private collection



Carol Lindemulder,
Road Trip, Afternoon Monsoon,
Oil on Linen, 2009, Private collection

SAN DIEGO HISTORY CENTER



1649 El Prado, Suite 3
San Diego, California 92101
www.sandiegohistory.org



Oceanside Museum of Art

704 Pier View Way
Oceanside, CA 92054
www.oma-online.org